

HOW DOES ENVIRONMENTAL HEALTH CONTRIBUTE TO DELIVERY OF THE WELL-BEING GOALS?

A GLOBALLY RESPONSIBLE WALES

- Delivering interventions that tackle climate change
- Promoting and delivering sustainable development interventions and projects
- Sharing knowledge, skills and best practice with international partners

A WALES OF VIBRANT CULTURE AND THRIVING WELSH LANGUAGE

- Delivering services and information bilingually

A WALES OF COHESIVE COMMUNITIES

- Regenerating communities by improving housing
- Delivering area regeneration projects
- Promoting community integration

A MORE EQUAL WALES

- Delivering interventions and services targeted at deprived communities and individuals
- Designing and delivering bespoke interventions addressing individual and community needs

Chartered Institute of
Environmental Health

Sefydliad Siartredig
Iechyd yr Amgylchedd



A PROSPEROUS WALES

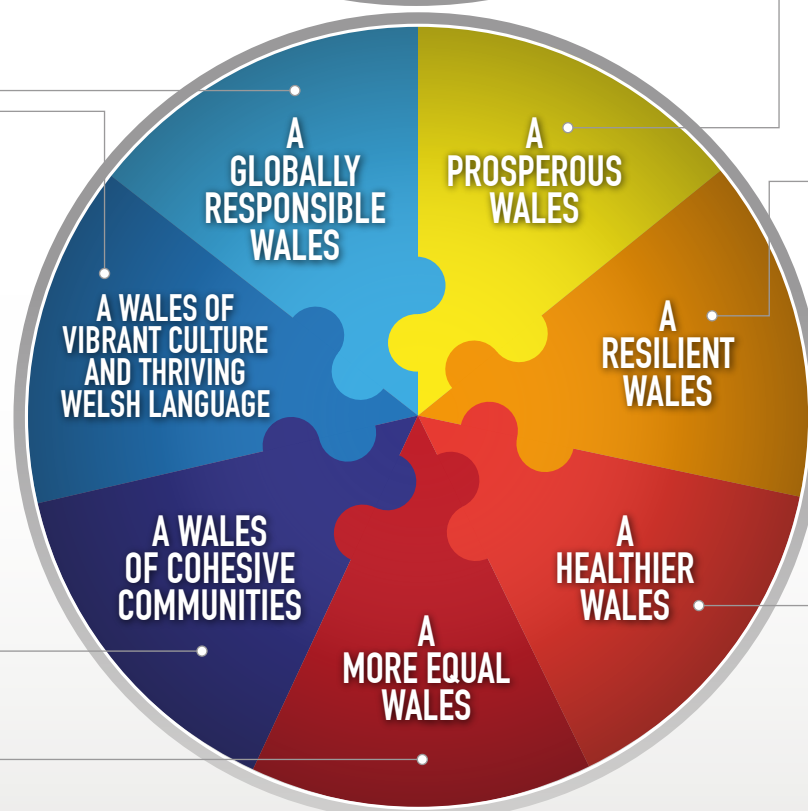
- Promoting good standards
- Providing advice and guidance and enhancing skills and knowledge
- Ensuring a level playing field for business
- Assisting rural diversification and innovative business development
- Supporting tourism and the night time economy

A RESILIENT WALES

- Maintaining business continuity
- Protecting communities and individuals from the impact of climate change
- Supporting business development and growth
- Supporting community development and growth

A HEALTHIER WALES

- Enforcing food hygiene and promoting food standards
- Preventing diseases of occupational exposure
- Mitigating the health impact of adverse lifestyle choices
- Reducing the likelihood of disease outbreaks
- Promoting health and wellbeing
- Ensuring healthy living and working conditions and environments



ENVIRONMENTAL HEALTH: UNSEEN, ESSENTIAL & COST EFFECTIVE