

DRAFT
WRITTEN STATEMENT
OF PUBLIC
RIGHTS OF WAY

N.B.—The Pamphlet references in this Form are to the January, 1950 Edition of the Memorandum prepared by the Commons, Open Space and Footpath Preservation Society entitled "SURVEY OF RIGHTS OF WAY."

Number of Paths coinciding with No. on Map (See Paras. 2 and 3).	Kind of Path (Use Symbols, See Para. 4).	Name of Path, if any, or its destination	Concise description of Path commencing with its starting point. Give features occurring on Path in correct order, and its widths where well defined. If metalled, by whom repaired. (See Para. 5 on Pages 11, 12 and 13).	Brief grounds for belief that way is public.
161	F.P.		From County Road south of 160 to County Road near Wern House.	
162 & 163	F.P.		From County Road south of Methodist Chapel via Lower Glyn to Ty-du.	
164 & 165	F.P.		From Lower Glyn to County Road near Ty-du.	
166	F.P.		From junction with 164 & 165 North to County Road.	
167	F.P.		From County Road 330 yds. south of The Castle due west to Parish Boundary.	
168	F.P.		From cross roads at Nex Common due north to County Road near Nex.	
169	F.P.		Short Cut at "The Corner".	
170-172	F.P.		From County Road 550 yds. west of The Corner via Well Cottage to Tredean Lodge.	
173	F.P.		From junction with 171 at Well Cottage to Devauden P.O. <i>UNC. COUNTY RR NEAR</i>	
174 & 175	F.P.		From Devauden Church to Tredean Arms.	
176	F.P.		Link between two County Roads at New Inn.	
177	F.P.		End of County Road near Pant Barn north to Parish Boundary.	
177A	F.P.		From 177 N.E. to Parish Boundary.	
178	F.P.		Link between County Roads at New Inn.	
179	F.P.		Cobblers Plain to Pantawarren Plantation.	

L ANVHANGER

Matheron
 For 25/10/1950
 MAGOE & UNDY
 St Arvans.
 L Langum
 Hilgwrwr

B.—The Pamphlet references in this Form are to the January, 1950 Edition of the Memorandum prepared by the Commons, Open Spaces and Footpath Preservation Society entitled "SURVEY OF RIGHTS OF WAY."

LOCAL AUTHORITY (BOROUGH, DISTRICT or PARISH COUNCIL) SHEPHERD BARN DISTRICT COUNCIL.

PARISH OF SHEPHERD BARN.

Name of Path, if any, or its destination.	Concise description of Path commencing with its starting point. Give features occurring on Path in correct order, and its widths where well defined. If metalled, by whom repaired. (See Para. 5 on Pages 11, 12 and 13).	Brief grounds for belief that way is public.	Signature, description and address of persons carrying out survey and dates.
---	---	--	--

From County Road south of 160 to County Road near Wern House.

From County Road south of Methodist Chapel via Lower Glyn to Ty-du.

From Lower Glyn to County Road near Ty-du.

From junction with 164 & 165 North to County Road.

From County Road 350 yds. south of The Castle due west to Parish Boundary.

From cross roads at Hex Common due north to County Road near Hex.

Short cut at "The Corner".

From County Road 550 yds. west of The Corner via Well Cottage to Tredan Lodge.

From junction with 171 at Well Cottage to Devauden P.O.

From Devauden Church to Tredan Arms.

Link between two County Roads at New Inn.

End of County Road near Pentra Barn north to Parish Boundary.

From 177 N.E. to Parish Boundary.

Link between County Roads at New Inn.

Cobblers Plain to Pantawarren Plantation.

166 F.P.
 167 F.P.
 168 F.P.
 169 F.P.
 170-172 F.P.
 173 F.P.
 174 & 175 F.P.
 176 F.P.
 177 F.P.
 177A F.P.
 178
 179 F.P.

From junction with 104 & 105 North to County Road.
 From County Road 330 yds. south of The Castle due west to Parish Boundary.

From cross roads at Nex Common due north to County Road near Nex.

Short Cut at "The Corner".

From County Road 550 yds. west of The Corner via Well Cottage to Tredenn Lodge.

From junction with 171 at Well Cottage to Devauden P.O.

From Devauden Church to Tredenn Arms.

Link between two County Roads at New Inn.

End of County Road near Parva Barn north to Parish Boundary.

From 177 N.E. to Parish Boundary.

Link between County Roads at New Inn.

Cobblers Plain to Parkwarren Plantation.

Mather
 for KESSELMAN

MACGEE & WINDY

sh

St Arvans.

Llangwm
 Urban.

Kilgerron

St. Mellons.

PARISH OF ...

N.B.—The Pamphlet references in this Form are to the January, 1950 Edition of the Memorandum prepared by the Commons, Open Spaces and Footpath Preservation Society entitled "SURVEY OF RIGHTS OF WAY."

Kind of Path (see Symbols, see Para. 4).	Name of Path, if any, or its destination	Concise description of Path commencing with its starting point. Give features occurring on Path in correct order, and its widths where well defined. If metalled, by whom repaired. (See Para. 5 on Pages 11, 12 and 13).	Brief grounds for belief that way is public.	Signature, description and address of persons carrying out survey and dates.
F.P.		From junction of 182 & 183 to junction of C.R.F. 17 & 22.		
F.P.		Runs parallel to County Road for 350 yds. north of Great Panta.		
F.P.		From County Road near Panta Barn to Little Panta.		
F.P.		From Little Panta to junction of 189 & 190.		
F.P.		From Little Panta north to Parish Boundary.		
F.P.		From Little Panta S.W. to join County Road.		
F.P.		From County Road via Fedw Pool to Lower Vedw.		
F.P.		From Great Panta to Methodist Chapel.		
F.P.		Continuation of C.R.B. 4 to junction of C.R.F. 23 & 24.		
F.P.	Itton School to Pilmeore Wood.	Continuation of County Road to Parish Boundary.		
F.P.	Rogerstone Grange to Pen-y-parc.	From Parish Boundary to County Road near Pen-y-parc.		
F.P.		From County Road near Pen-y-parc to junction of 199 & 203.		
F.P.		From junction of 196 & 197 to "The Gorse".		
F.P.		From junction of 197 & 203 to Gaerhill Farm.		
F.P.		Gaerhill Farm east to Parish Boundary.		

shu Langum Kilgwrrwg
St Arvans.

N.B.—The Pamphlet references in this Form are to the January, 1950 Edition of the Memorandum prepared by the Commons, Open Space and Footpath Preservation Society entitled "SURVEY OF RIGHTS OF WAY."

Number of Paths coinciding with No. on Map (See Paras. 2 and 3).	Kind of Path (Use Symbols. See Para. 4).	Name of Path, if any, or its destination	Concise description of Path commencing with its starting point. Give features occurring on Path in correct order, and its widths where well defined. If metalled, by whom repaired. (See Para. 5 on Pages 11, 12 and 13).	Brief grounds for belief that way is public.
180 & 181	F.P.		From junction of 182 & 183 to junction of C.R.F. 17 & 22.	
182 & 183	F.P.		Runs parallel to County Road for 350 yds. north of Great Panta.	
184	F.P.		From County Road near Panta Barn to Little Panta.	
185 & 186	F.P.		From Little Panta to junction of 189 & 190.	
187	F.P.		From Little Panta north to Parish Boundary.	
188	F.P.		From Little Panta S.W. to join County Road.	
189 & 190	F.P.		From County Road via Redw Pool to Lower Vedw.	
191	F.P.		From Great Panta to Methodist Chapel.	
192	F.P.			
193 & 194	F.P.	Itton School to Pilmore Wood.	Continuation of County Road to Parish Boundary.	
195	F.P.	Rogers Grange to Pen-y-parc.	From Parish Boundary to County Road near Pen-y-parc.	
196 & 197	F.P.		From County Road near Pen-y-parc to junction of 199 & 203.	
198	F.P.		From junction of 196 & 197 to "The Gorse".	
199	F.P.		From junction of 197 & 203 to Gerhill Farm.	
200	F.P.		Gerhill Farm east to Parish Boundary.	

Northern
 For the...
 Llangwm
 Hillgrove

LAVHANGE

184	F.P.	From County Road near Panta Barn to Little Panta.
185 & 186	F.P.	From Little Panta to junction of 189 & 190.
187	F.P.	From Little Panta north to Parish Boundary.
188	F.P.	From Little Panta S.W. to join County Road.
189 & 190	F.P.	From County Road via Fedw Pool to Lower Vedw.
191	F.P.	From Great Panta to Methodist Chapel.
192	F.P.	Continuation of C.R.B. 4 to junction of C.R.P. 23 & 24.
193 & 194	F.P.	Itton School to Pilmoore Wood.
195	F.P.	Rogerstone Grange to Pen-y-pare.
196 & 197	F.P.	From Parish Boundary to County Road near Pen-y-pare.
198	F.P.	From County Road near Pen-y-pare to junction of 199 & 203.
199	F.P.	From junction of 196 & 197 to "The Gorse".
200	F.P.	From junction of 197 & 203 to Gaerhill Farm. Gaerhill Farm east to Parish Boundary.

Kilgwrang

Langum

st Arvans

hu

Nathern
for k S S E N N W

Number of Paths coinciding with No. on Map (See Paras. 2 and 3).	Kind of Path (Use Symbols. See Para. 4).	Name of Path, if any, or its destination.	Concise description of Path commencing with its starting point. Give features occurring on Path in correct order, and its widths where well defined. If metalled, by whom repaired. (See Para. 5 on Pages 11, 12 and 13).	Brief grounds for belief that way is public.
201	F.P.		Geathill Farm north to Parish Boundary.	
202	F.P.		From junction of 199 & 203 E.N.F. to Parish Boundary.	
203-207	F.P.		From junction of 197 & 202 to Parish Boundary near the foot.	
208-338	F.P.		Paths in Red Wood.	
339-371	F.P.		Paths in New Wood.	
372-379	F.P.		Paths in Perous Wood.	
380-398	F.P.		Paths in Gern-garw Wood.	
399-486	F.P.		Paths in Chestow Park Wood.	

Matheron
for the
MACE & WINDY
St Arvans
Llangwm
Kilgwynn

The Pamphlet references in this Form are to the January, 1950 Edition of the Memorandum prepared by the Commons, Open Spaces and Footpath Preservation Society entitled "SURVEY OF RIGHTS OF WAY".

The Pamphlet references in this Form are to the January, 1950 Edition of the Memorandum prepared by the Commons, Open Spaces and Footpath Preservation Society entitled "SURVEY OF RIGHTS OF WAY".

Name of Path, if any, or its destination	Concise description of Path commencing with its starting point. Give features occurring on Path in correct order, and its widths where well defined. If metalled, by whom repaired. (See Para. 5 on Pages 11, 12 and 13).	Brief grounds for belief that way is public.	Signature, description and address of persons carrying out survey and dates.
--	---	--	--

Garthill Farm north to Parish Boundary.

From Junction of 199 & 203 E.N.E. to Parish Boundary.

From Junction of 197 & 202 to Parish Boundary near the Tour.

Paths in Redw Wood.

Paths in New Wood.

Paths in Percus Wood.

Paths in Celn-Garw Wood.

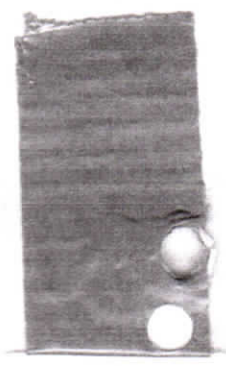
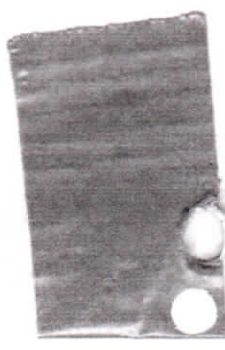
Paths in Chestow Park Wood.



Definitive Map

Definitive Statement

**WRITTEN STATEMENT
PUBLIC RIGHTS OF WAY
DEFINITIVE MAP OF
County Of Monmouth**



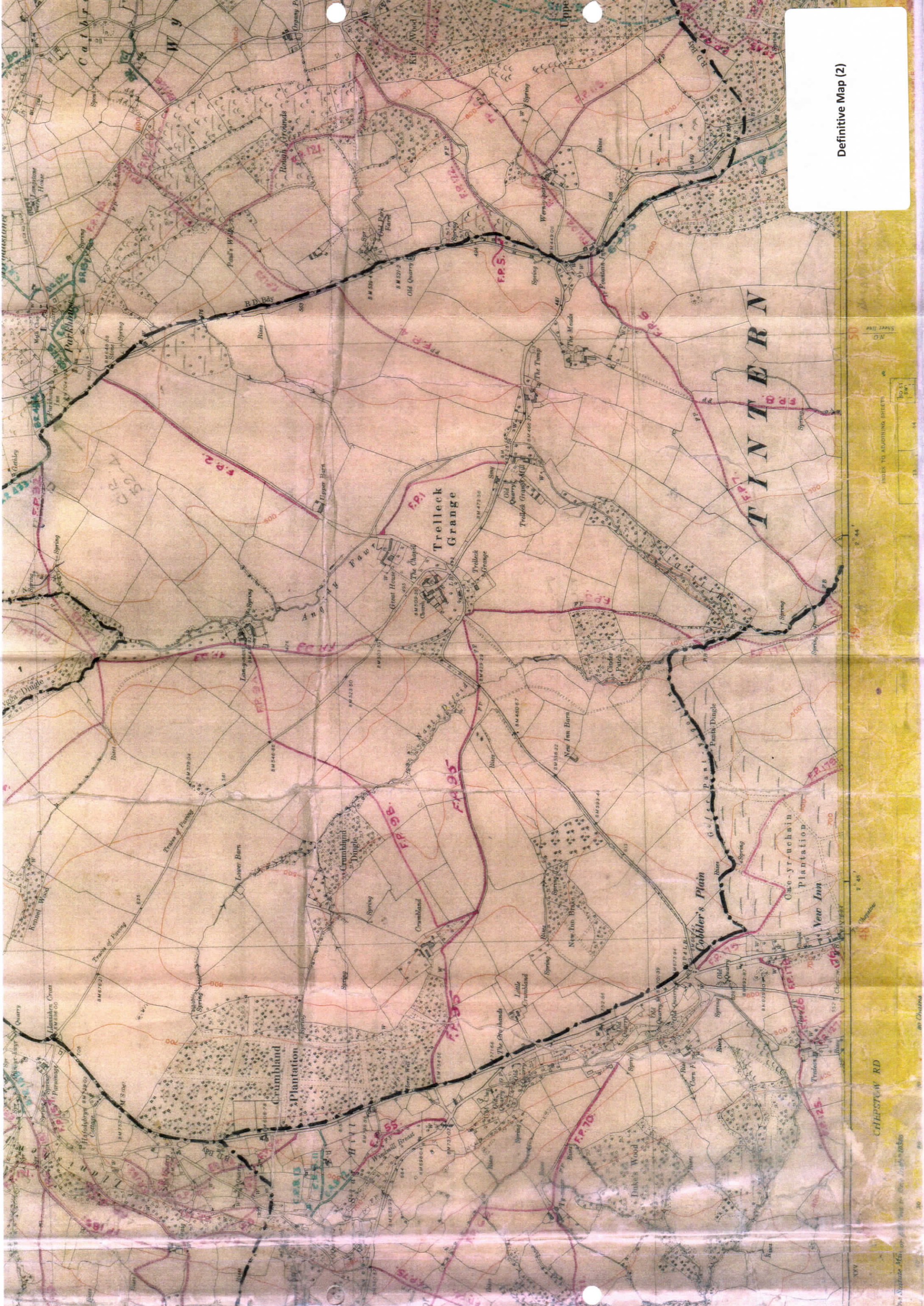
NATIONAL PARKS AND ACCESS TO THE COUNTRYSIDE ACT, 1949.
SURVEY OF RIGHTS OF WAY.

LOCAL AUTHORITY (Borough, District or Parish Council).....**CHEPSTON RURAL DISTRICT COUNCIL**.....
PARISH OF.....**DEVON**.....

N.B.—The Pamphlet references in this Form are to the January, 1950 Edition of the Memorandum prepared by the Commons, Open Spaces and Footpath Preservation Society entitled "SURVEY OF RIGHTS OF WAY."

Number of Paths coinciding with No. on Map (See Paras. 2 and 3).	Kind of Path (Use Symbols, See Para. 4).	Name of Path, if any, or its destination	Concise description of Path commencing with its starting point. Give features occurring on Path in correct order, and its widths where well defined. If metalled, by whom repaired. (See Para. 5 on Pages 11, 12 and 13).	Brief grounds for belief that way is public.	Signature, description and address of persons carrying out survey and dates.
162 & 163	F.P.		From County Road south of Hed-dies Chapel via Lower Glyn to Ty-du		
164 & 165	F.P.		From Lower Glyn to County Road near Ty-du		
166	F.P.		From junction with 164 & 165 north to County Road		
167	F.P.		From County Road 330 yds south of The Gacile due west to Parish Boundary		
168	F.P.		From cross roads at Hex Comen due north to County Road near Rox		
169	F.P.		Short cut at 'The Garner'		
170-172	F.P.		From County Road 550 yds east of The Corner via Hell Cottage to Tredean Lodge		
173	F.P.		From junction with 171 at Hell Cottage to Devarden P.O.		
174 & 175	F.P.		From Devarden Church to Tredean Area		
176	F.P.		Link between two County Roads at New Inn .		
177	F.P.		End of County Road near Panta Barn north to Parish Boundary		
177a	F.P.		From 177 N.E. to Parish Boundary		
178			Link between County Roads at New Inn		
179	F.P.		Cobblers Plain to Pantamarren station.		
180 & 181	F.P.		From junction of 182 & 183 to junction of C.R.F. 17 & 22		
182 & 183	F.P.		Runs parallel to County Road for 350 yds north of Great Panta		
184	F.P.		From County Road near Panta Barn to Little Panta		
185 & 186	F.P.		From Little Panta to junction of 189 & 190		
187	F.P.		From Little Panta north to Irish Boundary .		
188	F.P.		From Little Panta S.W. to join County Road		
189, 190 & 190A	F.P.		From County Road via Fedm Pool to Lower Veda		
191	F.P.		From Great Panta to Methodist Chapel		
192	F.P.		Continuation of C.R.F. 4 to junction of C.R.F. 23 & 24		
193 & 194	F.P.	Itton School to Pineore Wood	Continuation of County Road to Parish Boundary		
195	F.P.	Rogersons Grange to Pen-y-parc	From Parish Boundary to County Road near Pen-y-parc		
196 & 197	F.P.		From County Road near Pen-y-parc to junction of 199 & 203		
198	F.P.		From junction of 196 & 197 to 'The Green'		
199	F.P.		From junction of 197 & 203 to Gaerhill Farm		
200	F.P.		Gaerhill Farm east to Parish Boundary		
201	F.P.		Gaerhill Farm north to Parish Boundary		

Lot	Notes	Remarks
107	F.P.	From County Road 350 yds south of The Castle due west to Parish Boundary
160	F.P.	From cross roads at Hex Common due north to County Road near Hex
169	F.P.	Short cut at 'The Garner'
170-172	F.P.	From County Road 550 yds west of The Corner via Bell Cottage to Tredan Lodge
173	F.P.	From junction with 171 at Well Cottage to Devauden P.O.
174 & 175	F.P.	From Devauden Church to Tredan Arms
176	F.P.	Link between two County Roads at New Inn.
177	F.P.	End of County Road near Panta Barn north to Parish Boundary
177a	F.P.	From 177 N.E. to Parish Boundary
178	F.P.	Link between County Roads at New Inn
179	F.P.	Cobbler's Plain to Pantourren/Labitation.
180 & 181	F.P.	From junction of 182 & 183 to junction of C.R.F. 17 & 22
182 & 183	F.P.	Runs parallel to County Road for 350 yds north of Great Panta
184	F.P.	From County Road near Panta Barn to Little Panta
185 & 186	F.P.	From Little Panta to junction of 189 & 190
187	F.P.	From Little Panta north to Parish Boundary.
188	F.P.	From Little Panta S.W. to join County Road
189, 190 & 190A	F.P.	From County Road via Fedu Pool to Lower Veda
191	F.P.	From Great Panta to Methodist Chapel
192	F.P.	Continuation of C.R.F. 4 to junction of C.R.F. 23 & 24
193 & 194	F.P.	Continuation of County Road to Parish Boundary
195	F.P.	From Parish Boundary to County Road near Pen-y-parc
196 & 197	F.P.	From County Road near Pen-y-parc to junction of 199 & 203
198	F.P.	From junction of 196 & 197 to 'The Gorse'
199	F.P.	From junction of 197 & 203 to Gaerhill Farm
200	F.P.	Gaerhill Farm east to Parish Boundary
201	F.P.	Gaerhill Farm north to Parish Boundary
202	F.P.	From junction of 199 & 203 E.N.E. to Parish Boundary.
203 - 207	F.P.	From junction of 197 & 202 to Parish Boundary near the Tent
208, 212, 214, 217, 221, 226, 227, 231, 237, 241, 242, 248, 251, 253, 254, 257, 270, 279, 286, 289, 302, 304, 307, 315, 316, 323, 324, 333, 335, 338	F.P.	Paths in Fedu Wood
342, 343, 354, 365, 367	F.P.	Paths in New Wood
372, 374, 379	F.P.	Paths in Fercus Wood
382, 385, 397, 399, 391, 393, 395	F.P.	Paths in Coff-Garn Wood
399, 401, 404, 409, 419, 424, 429, 434, 439, 454, 457, 461, 463, 464, 466, 470, 471, 473, 475, 477, 479	F.P.	Paths in Chepstow Park Woodland.
480	F.P.	From junction with F.P. 107 in an easterly direction through road to County Road.
481	B.P.	From junction with County Road in an easterly direction to junction with F.P. 324.
482	C.R.F.	From County Road S. of Pen-y-parc in a S.W. direction to Parish Boundary.



Definitive Map (2)

INDEX TO ADJOINING SHEETS

CHEPSTOW RD

On the Statute Map of 1861 for the Tintern Estate