



CONSULTATION DOCUMENT

Relocation and associated increase in capacity of Ysgol
Gymraeg Y Fenni

MONMOUTHSHIRE COUNTY COUNCIL

CONTENTS

| | |
|---|----|
| 1. INTRODUCTION..... | 3 |
| 2. CONSULTATION ARRANGEMENTS | 3 |
| 2.1 FORMAL CONSULTATION PROCESS | 4 |
| 2.2 CONSULTATION WITH CHILDREN AND YOUNG PEOPLE | 5 |
| 2.3 CONCLUSION OF THE FORMAL CONSULTATION PROCESS | 5 |
| 2.4 IMPLEMENTATION OF THE PROPOSALS | 6 |
| 3. BACKGROUND INFORMATION | 6 |
| 4. CURRENT WELSH MEDIUM PROVISION | 7 |
| 5. THE JOURNEY SO FAR | 8 |
| 5. THE PROPOSAL | 9 |
| 5.1 REASONS FOR THE PROPOSAL..... | 9 |
| 5. OPTIONS APPRAISAL | 11 |
| 5.1 THE PREFERRED OPTION..... | 14 |
| 5. RISKS AND COUNTER MEASURES | 14 |
| 6. SCHOOLS AFFECTED BY THE PROPOSAL..... | 15 |
| 6.1 CURRENT NUMBERS ON ROLL | 15 |
| 6.2 NUMBERS ON ROLL TRENDS..... | 16 |
| 6.2 PROJECTED NEED | 17 |
| 6.3 PROJECTED NUMBER ON ROLL AT AFFECTED SCHOOLS | 17 |
| 6.4 IMPACT OF PROPOSALS ON SURPLUS PLACES..... | 18 |
| 6.5 BUILDING CONDITION RATINGS..... | 19 |
| 7. QUALITY AND STANDARDS IN EDUCATION | 20 |
| 8. WELSH IN EDUCATION STRATEGIC PLAN | 21 |
| 9. FINANCE..... | 22 |
| 10. LAND AND BUILDINGS | 22 |
| 12. STAFFING | 22 |
| 13. COMMUNITY IMPACT / EQUALITY IMPACT ASSESSMENT | 22 |
| 13.1 COMMUNITY IMPACT ASSESSMENT | 22 |
| 13.2 EQUALITY IMPACT ASSESSMENT..... | 23 |
| 14. WELSH LANGUAGE IMPACT | 23 |
| 15. ADMISSION ARRANGEMENTS | 23 |
| 15.1 CATCHMENT AREAS..... | 23 |
| 16. HOME TO SCHOOL TRANSPORT | 24 |
| 17. OTHER INFORMATION | 24 |
| 18. APPENDIX 1 - AGREED CATCHMENT AREAS | 25 |

19. APPENDIX 2 - ESTYN REPORTS 26
20. APPENDIX 3 - LIST OF CONSULTEES 29
21. APPENDIX 4 - RESPONSE PRO-FORMA 30

1. INTRODUCTION

Monmouthshire County Council (the Council) has a statutory duty to secure sufficient and suitable school places for children within the County, and in doing so ensure that resources and facilities are efficiently utilised to deliver the educational opportunities that our children deserve.

The duty to ensure appropriate provision of school places is not limited to our English Medium School places. The Council has a duty to ensure that its provision of places for those young people wishing to be educated through the medium of Welsh is suitable, sustainable and allows an opportunity for growth.

This document represents the Council's responsibilities as part of the School Organisation Code 2018 (a document produced by virtue of the School Standards and Organisation (Wales) Act 2013)¹ to consult with appropriate stakeholders when giving consideration to any significant school reorganisation proposals.

The purpose of this document is to provide information on the Council's proposal to increase the capacity of Ysgol Gymraeg Y Fenni to 420 places plus a 60 place Meithrin, delivered through its relocation to the school site previously occupied by the former Deri View Primary School.

2. CONSULTATION ARRANGEMENTS

The Council proposes ***to relocate Ysgol Gymraeg Y Fenni from its existing site to the site previously occupied by Deri View Primary School.*** The relocation of the school will enable a revised capacity from 317 places to 420 places, plus a 60 place Meithrin (Nursery).

The Council is now engaging in statutory consultation processes with all interested parties to ensure that any decision taken by the Council is an informed one.

The proposed timescales for the formal consultation process are:

| Statutory Consultation Period to commence on | Statutory Consultation Period concludes on | Period of consultation required |
|--|--|------------------------------------|
| 29 th January 2024 | 11 th March 2024 | 6 weeks (including 20 school days) |

2.1 FORMAL CONSULTATION PROCESS

The formal consultation process represents an opportunity for people to learn about the proposal, ask questions and make comments that will be recorded and considered when the Council determines whether or not to implement the proposal.

The Council seeks to engage with a wide range of stakeholders on the proposal outlined in this consultation document. A full list of the consultees can be found under Appendix 3.

As part of the consultation process, the Council has arranged for the following sessions to engage interested parties who may wish to learn about the proposal.

| Date | Consultee group | Session time | Venue |
|--|--------------------------------------|---------------|--|
| Monday 26 th February 2024 | Staff | 16:00 – 16:50 | The former Deri View Primary School site |
| | Governors | 17:00 – 17:50 | |
| | Parents and other interested parties | 18:00 – 18:50 | |

In addition to the above, any views, comments, or questions on the proposal can be submitted to the Council by:

- Completing the online consultation questionnaire available via www.monmouthshire.gov.uk/school-reorganisation
- Emailing strategicreview@monmouthshire.gov.uk

Completion of the questionnaire will enable us to undertake detailed analysis of the feedback we receive from consultees.

Comments must be submitted to the Authority by the consultation closing date.

Important: This consultation will not make any assumptions, so whether you are for or against the proposed changes, please take this opportunity to have your say.

If you have any questions on the proposals please contact the Access Unit on 01633 644508 or by emailing strategicreview@monmouthshire.gov.uk

It is important to note that any unfavourable comments made during the consultation period will not be treated as objections to the proposals but will be accepted as adverse comments. Objections to the proposals can only be accepted after the consultation period has concluded and should the Council determine to proceed with the proposals by way of publishing statutory notices.

If you wish to object, you will need to do so in writing should the Council enter into a statutory objection period. If consultees submit a request during the objection period, asking for a response submitted at the consultation stage to be treated as an objection this will be accepted.

2.2 CONSULTATION WITH CHILDREN AND YOUNG PEOPLE

The views of children and young people are extremely important to the Council and therefore children and young people will be provided with opportunities to contribute to this consultation process. The Council has produced a summary version of this consultation document, which will be made accessible for all children and young people affected by this proposal.

The Council also intends to hold sessions with the school council and individual learners where this is felt to be appropriate and practicable. Consultation with children and young people will be supported by key professionals and their views captured and considered in any reports that may determine our way forward.

2.3 CONCLUSION OF THE FORMAL CONSULTATION PROCESS

Once the opportunity to respond to the proposal outlined within this consultation document has closed, the Council's Cabinet will then be provided with a consultation report analysing the views shared by consultees during the formal consultation process and determine whether or not they wish to proceed with the proposal.

If the decision is taken by the Council's Cabinet to proceed with the proposal, a statutory notice will be published. The statutory notice period will last for 28 days from the date of publication to enable consultees to express their views in the form of supporting or objecting to the proposal. A copy of the consultation report will be published at least two weeks prior to the publication of a statutory notice.

The Council's Cabinet will then consider the responses received during the statutory notice period in the form of an objection report and make the final decision as to whether to proceed with the proposal. The proposed timetable for decision making following the formal consultation process is:

| Stage of process | Key date |
|--|-----------------------------|
| Cabinet consider the results of the consultation and determines whether to proceed with proposal | 10 th April 2024 |
| Should the Council wish to proceed, statutory notices will be published and we enter into objection period | 22 nd April 2024 |
| Closure of the objection period | 21 st May 2024 |
| Cabinet consider the objection report and determine whether or not to implement the proposal | 17 th July 2024 |
| Implementation of Proposal | April 2025 |

2.4 IMPLEMENTATION OF THE PROPOSALS

Should the outcome of the statutory process outlined within this consultation document conclude that proposals are to proceed as presented, Ysgol Gymraeg Y Fenni will relocate to its new School site with its revised capacity of 420 places (plus 60 place Meithrin) with effect from April 2025.

3. BACKGROUND INFORMATION

The Council is committed to improving the educational achievement and attainment for all children and young people in the county through the provision of an inclusive education system that places the learner at the centre.

The Council strives to provide children and young people with the best possible start in life. Investing in all our children's learning and development, ensuring they have the environments, skills and support to flourish and be prepared for the work of the future and meet the demands of a rapidly changing world environment.

Through our work with schools, parents and key partners, we seek to:

- Secure equality of access to education for all children and young people
- Deliver a high quality and inclusive curriculum for all learners
- Educate our children and young people in their local communities whenever possible
- Support children and young people and their families to enable them to live a happy and fulfilling life
- Provide meaningful opportunities for learners to access support when they need it and return to their community school as soon as they are able
- Meet the needs of children and young people now and be suitably adaptable to meet changing needs in the future

The aims above link directly to our Directorate core values, which aspire to ensure that all of our children and young people will:

- **Be ready for school** - through engagement with our Early Years and Flying Start programmes.
- **Be in school** - supported by our Access and Education Welfare teams.
- **Be well behaved** - through support from our Behaviour and Inclusion teams.
- **Be well taught** - by the teachers and teaching assistants in our schools.

Over the last five years, we have made progress towards fulfilling this commitment for the majority of our children and young people. Education remains a top priority for the Council and it is committed to delivering improved performance in educational provision in line with the requirements of the Welsh Government policy and objectives.

At its meeting in October 2017, Cabinet agreed the submission of its Band B proposals to Welsh Government as part of what was then known as the 21st Century Schools Programme. The most significant part of the proposal involved the establishment of an all-through school on the King Henry VIII School site, which would involve the merger of King Henry VIII Comprehensive and Deri View Primary Schools.

However, the scheme also outlined the Council's commitment to increasing its Welsh medium provision within the area, and agreed that the above scheme would provide the opportunity to relocate Ysgol Gymraeg Y Fenni to the 420 place Deri View Primary School site, subject to statutory consultation processes.

The Statutory consultation process surrounding the new 3-19 School concluded in January 2022 where Cabinet made the decision to establish the school with effect from September 2023. The new school has now opened, albeit the primary and secondary provision is currently located on separate sites whilst we await the completion of the new school building works. It is anticipated that the primary elements of the new provision will relocate to the former King Henry VIII Comprehensive School site during the autumn term 2024, leaving the former Deri View Primary School site vacant.

The above arrangements now mean that we are able to proceed with the statutory consultation processes required to relocate Ysgol Gymraeg Y Fenni to the 420 place site, with effect from April 2025.

4. CURRENT WELSH MEDIUM PROVISION

The Council's Welsh medium offer is currently delivered through the following provision:

Primary Education

The Council currently has two Welsh medium Primary Schools, Ysgol Gymraeg Y Fenni located in the north of the county in Abergavenny, and Ysgol Gymraeg Y Ffin located in the south of the county in Caldicot. In addition to this, a new seedling school will open in Monmouth delivering Welsh medium education for those eligible to start Nursery and Reception in September 2024.

Secondary Education

The secondary Welsh medium provision is currently delivered through collaboration arrangements with our partners Torfaen County Council and Newport City Council.

For families residing within the North of the County, children wishing to continue their studies through the medium of Welsh can do so by attending their catchment school of Ysgol Gyfun Gwynllyw, Torfaen.

For families residing within the South of the County, children wishing to continue their studies through the medium of Welsh can do so by attending their catchment school of Ysgol Gyfun Gwent Is Coed, Newport.

5. THE JOURNEY SO FAR

Monmouthshire County Council fully supports and is committed to the Welsh Government's national strategy Cymraeg 2050, which introduces a long-term vision for a Wales where the Welsh Language thrives. The strategy aims to increase the number of Welsh speakers to 1 million by 2050.

The Council has invested significantly to increase the provision that is available to those seeking to be educated through the medium of Welsh:

1. Ysgol Gymraeg Y Ffin

Ysgol Gymraeg Y Ffin, located in the South of the County (Caldicot) has been subject to significant investment which has resulted in an increase in its capacity from 180 places to 210 places.

The school has also seen investment through means of building a new "community hwb" on site. The provision currently houses a Cylch Meithrin with wrap around child care facilities alongside flying start provision, all provided through the medium of Welsh. This has been a fantastic investment that has allowed the community to access the Welsh language from the very youngest of ages.

Finally, the Council has worked closely with Ysgol Gymraeg Y Ffin to establish an immersion facility on site, allowing us to deliver a period of intense Welsh language support to those young people who are considered to be "late comers" to Welsh medium provision.

2. Ysgol Gymraeg Trefynwy (Monmouth)

Welsh Government announced that they would be providing funding to support capital investments and facilitate growth in Welsh medium education and the use of the Welsh language.

Monmouthshire County Council was successful in its bid of around £3.1 million to establish a new Welsh medium seedling School with Early Years and childcare provision in Monmouth. Following a period of statutory consultation, the Council's Cabinet confirmed its decision in September 2023 to establish the provision on the site of Overmonnow Primary School. The seedling school will begin its journey by

offering provision for those children eligible to start Nursery and Reception in September 2024.

3. Ysgol Gymraeg Y Fenni

Ysgol Gymraeg Y Fenni, located in the North of the County (Abergavenny) has pleasingly seen increasing numbers and as such has been supported by the Council through means of providing additional accommodation that has increased their capacity from 257 school places to 317 (plus a 60 place Meithrin) giving a total capacity of 347. However, the increase has been delivered through means of renting temporary accommodation on the site of the current school.

The Council acknowledged that this increase in capacity would be a temporary measure whilst options for a longer term, more sustainable option could be delivered. It is felt that the proposals outlined within this consultation document will provide the school and its community with the required facilities to continue its success in growing the Welsh Language.

5. THE PROPOSAL

The proposal is to relocate Ysgol Gymraeg Y Fenni from it's current site of St Davids Road, Abergavenny, NP7 6HF to the former Deri View Primary School site of Llwynu Lane, Abergavenny, NP7 6AR. The approximate distance between the current site and the proposed site is 0.4 miles.

The proposed relocation of Ysgol Gymraeg Y Fenni will enable the capacity of the School to be increased from its current 317 places (45 per year group) to 420 places (60 per year group) with an additional 60 place Meithrin (nursery).

The new school site will also provide the opportunity to establish an immersion centre to mirror that currently offered at Ysgol Gymraeg Y Ffin, Caldicot. The immersion centre will allow a period of intense support to enable those young people considered as “late comers” to the language to be able to access Welsh medium provision alongside their peers.

5.1 REASONS FOR THE PROPOSAL

The proposals outlined within this consultation document have been formed with the follow principles in mind:

1) Our Statutory duties

Monmouthshire County Council fully supports and is committed to the Welsh Government's national strategy Cymraeg 2050, which introduces a long-term vision for a Wales where the Welsh Language thrives. The strategy aims to increase the number of Welsh speakers to 1 million by 2050.

The Council recognises that in order to contribute to this national target, it must deliver on its statutory duties to ensure that there is growth of the Welsh language across the county. One of the ways of us achieving this growth is to continue to develop and improve our provision of Welsh medium education and the benefits it brings. It is hoped that by doing so, there will be an increase in the demand for Welsh medium school places across the County.

2) Responding to existing Welsh Medium demand

Ysgol Gymraeg Y Fenni is our current Welsh medium primary school that serves the North of the County. The school was originally opened on its current site as a 210 place Primary School, with provision available for 30 children per year group. The demand for Welsh medium education across the area has since increased as shown in the table below:

Ysgol Gymraeg Y Fenni Numbers on roll (Reception – Year 6) based on January annual census returns:

| 2015 | 2016 | 2017 | 2018 | 2019 | 2020 | 2021 | 2022 | 2023 |
|------|------|------|------|------|------|------|------|------|
| 187 | 213 | 222 | 234 | 230 | 221 | 228 | 250 | 254 |

The current numbers on roll (September 2023*) are:

| Reception | Yr 1 | Yr 2 | Yr 3 | Yr 4 | Yr 5 | Yr 6 | Total |
|-----------|------|------|------|------|------|------|-------|
| 31 | 36 | 60 | 26 | 37 | 21 | 30 | 241 |

**September 2023 numbers have been quoted as we have not yet reached the January 2024 annual census return.*

In response to this demand, the Council has worked closely with the School and its governing body to increase the capacity of the school within the limitations of its current site. The School now offers a capacity for up to 317 children and young people with year group intake number of 45. In addition to this, the school has a 60 place Meithrin. Unfortunately, the increase in capacity is delivered through temporary accommodation and is not a sustainable option to allow us to reach our aspirations outlined within the Welsh in Education Strategic Plan (WESP). In addition, there are no opportunities to further increase the capacity of the school on its current site.

3) Quality teaching and learning environments

The Council has committed to ensuring that it offers excellent teaching and learning environments to our children and young people, so that they stand the best chance of achieving excellent outcomes that will set them up for their journey through life.

As mentioned above, the Council over recent years has supported the increase in capacity at Ysgol Gymraeg Y Fenni in response to its growing demand. However, of its 317 available places, 137 places are currently delivered through the use of temporary accommodation, which the Council does not consider to be either suitable or sustainable for the delivery quality teaching and learning in the longer term.

In addition to this, the Headteacher and governing body continue to report concerns around the unsustainable pressures on facilities across the site as a result of increasing numbers on roll.

5. OPTIONS APPRAISAL

In forming its proposal the Council has undertaken a full options appraisal:

Option 1 – Do nothing and maintain the status quo. This would mean that Ysgol Gymraeg Y Fenni would remain on its current site with its current capacity.

| Strengths | Weaknesses |
|--|---|
| Low Cost | The Council would not be able to grow Welsh Medium provision in the area beyond the current capacity |
| No disturbance for staff, children and families associated with moving sites | Would not contribute to the Welsh Governments aim of 1 million Welsh Speakers by 2050 |
| No impact on numbers on roll for English medium schools | We would not be meeting our targets of providing excellent teaching and learning facilities as the children on site would continue to receive a large proportion of their teaching and learning through temporary accommodation |
| | The Council would need to continue to pay costs for the rental of temporary accommodation currently located on the school site |
| | We would not meet our agreed WESP targets, including increasing the number of learners being educated through the medium of Welsh. |

Option 2 – Build a new 420 place Welsh medium Community Primary school to replace the existing Ysgol Gymraeg Y Fenni School on a new site in the Abergavenny area.

| Strengths | Weaknesses |
|--|---|
| Would help us to achieve the targets outlined in our WESP, including increasing the number of learners being educated through the medium of Welsh. | Extremely high cost and do not have the budget to deliver a brand new school |
| We would be able to deliver excellent education facilities for the children currently on roll at Ysgol Gymraeg Y Fenni | There are no identified building sites available within the Abergavenny area to allow the build of a new school. |
| New school building could stimulate demand | There is currently a purpose build 420 place primary school with excellent teaching and learning facilities that would not be utilised |
| Contributes to the Welsh Governments aim of 1 million Welsh speakers by 2050 | The timescales would be longer meaning Ysgol Gymraeg Y Fenni would need to remain on its current site for a significantly longer period |
| Would no longer be required to fund the rental of the temporary accommodation located on the Ysgol Gymraeg Y Fenni site | |

Option 3 – Increase the capacity of Ysgol Gymraeg Y Fenni on its current site

| Strengths | Weaknesses |
|--|---|
| Would help us to achieve the targets outlined in our WESP, including increasing the number of learners being educated through the medium of Welsh. | Extremely high cost and do not have the budget to deliver the significant building works required |
| Contributes to the Welsh Governments aim of 1 million Welsh speakers by 2050 | The current school site is unlikely to be able to accommodate and further increase in capacity. |
| The school community would not need to relocate to a new site | There is currently a purpose build 420 place primary school with excellent teaching and learning facilities that would not be utilised. |

| | |
|--|---|
| | |
| | The timescales would be longer meaning Ysgol Gymraeg Y Fenni would need to remain on its current site for a significantly longer period |
| | It would be difficult to deliver such a project whilst the children are on site |
| | Temporary accommodation would be required to deliver this proposal |

Option 4 – Relocate Ysgol Gymraeg Y Fenni to the site previously occupied by Deri View Primary School

| Strengths | Weaknesses |
|--|--|
| The existing site is suitable to be able to accommodate 420 pupils plus 60 place Meithrin, allowing the numbers of Welsh medium learners to grow | Initial disturbance for staff and pupils through relocating to a new site |
| The option can be delivered within the budget available to the Council | The new site is approximately 0.4 miles away from the existing site meaning a small increase in travelling distance for some |
| The site already provides excellent teaching and learning facilities which will benefit | |
| Would help us to achieve the targets outlined in our WESP, including increasing the number of learners being educated through the medium of Welsh. | |
| Contributes to the Welsh Governments aim of 1 million Welsh speakers by 2050 | |
| The increase in capacity and improved facilities can be implemented quickly (April 2025) | |
| We would be making excellent use of a site already equipped to allow the growth of Welsh medium education within the area | |

5.1 THE PREFERRED OPTION

Our preferred option is option 4, which is to utilise existing accommodation available at the former Deri View Primary School site in order to increase the capacity of Welsh medium education within the area to 420 places.

This option is not only the most financially viable but delivers excellent teaching and learning facilities and a prompt solution to relieving the accommodation pressures currently experienced on the current Ysgol Gymraeg Y Fenni site.

5. RISKS AND COUNTER MEASURES

| Risks | Counter Measures |
|--|--|
| The project will not be delivered on time and within budget | Aim to meet the programme dates to deliver on time The project does not involve major building works and the timeline for relocation has been set as a realistic target |
| Statutory objections are received to the proposals | Ensure thorough statutory consultation processes are followed and key stakeholders are consulted with and fully informed from the outset |
| Welsh medium demand in the area is not as expected and pupil numbers are low | It is very difficult to predict whether demand for places will be as expected. An appropriate promotion campaign will continue to operate in order to stimulate demand. |
| The majority of the funding formula is based on pupil numbers and therefore growing schools will see a delay in funding which could put the school in a deficit. | There are elements of the funding formula that offer protection to allow schools to classes of a maximum of 30 in each key stage, in addition to this there is a minimum level of funding built in for management and administration. Several of the premises costs are delegated on floor area which will allow classrooms to be resourced. |
| Numbers on roll in the English medium schools in the Abergavenny cluster may decline as a result of the proposal | This will be counter balanced by an increase in Welsh medium places but overall the number of places within the cluster will be the same. Should the demand for Welsh medium places increase, a review of English |

| | |
|---|---|
| | medium schools will be undertaken to ensure a sufficient number of places are offered across the cluster. |
| There may be an increase in surplus places in English medium schools within the cluster | Surplus places are monitored closely, and school reorganisation proposals implemented if necessary |

6. SCHOOLS AFFECTED BY THE PROPOSAL

6.1 CURRENT NUMBERS ON ROLL

The following table shows general information on the schools affected or likely to be affected by the proposals. The Language category and the capacity has been calculated using the Welsh Government guidance “Measuring the capacity of schools in Wales” and the capacities below are based on the calculations for 2024/25 academic year.

Ysgol Gymraeg Y Fenni is the school immediately affected as it is proposed to relocate to a new site with an increased capacity of 420 places plus 60 place Meithrin (Nursery) giving a total capacity for 480 children.

| School Name | Language Category | School Type | Capacity & Admission Number | Number of Nursery Places | Age Range | Pupil Numbers September 2023 (Exc Nursery) |
|------------------------------|-------------------|-------------|-----------------------------|--------------------------|-----------|--|
| Ysgol Gymraeg Y Fenni | WM | Community | 317 / 45 | 60 | 3-11 | 241 |

The English medium schools within the cluster have been identified as schools likely to be impacted by proposals, as a desire to increase the numbers of learners accessing Welsh medium education, and in particular Ysgol Gymraeg Y Fenni in line with this consultation, is likely to result in a decrease in the numbers on roll across our English medium schools.

| School Name | Language Category | School Type | Capacity & Admission Number | Number of Nursery Places | Age Range | Pupil Numbers September 2023 (Exc Nursery) |
|-------------------------------|-------------------|-------------|-----------------------------|--------------------------|-----------|--|
| Cantref Primary School | EM | Community | 210 / 30 | 30 | 3-11 | 210 |

| | | | | | | |
|---|----|----------------------|----------|-----|------|-----|
| Gilwern Primary School | EM | Community | 210 / 30 | n/a | 4-11 | 212 |
| Goytre Fawr Primary School | EM | Community | 210 / 30 | n/a | 4-11 | 180 |
| King Henry VIII 3-19 School | EM | Community | 420 / 60 | 60 | 3-19 | 232 |
| Llanfoist Fawr Primary School | EM | Community | 210 / 30 | n/a | 4-11 | 206 |
| Llantilio Pertholey VC Primary School | EM | Voluntary Controlled | 210 / 30 | n/a | 4-11 | 196 |
| Llanvihangel Crucorney Primary School | EM | Community | 77 / 11 | n/a | 4-11 | 70 |
| Our Lady and St Michaels RC Primary School | EM | Voluntary Aided | 210 / 30 | n/a | 4-11 | 204 |

6.2 NUMBERS ON ROLL TRENDS

The following table shows the number of pupils on roll for the last five annual school censuses for all school affected by the proposal. The figures do not include nursery pupils or pupils on roll at Special Needs Resource bases.

| School Name | January 2019 | January 2020 | January 2021 | January 2022 | January 2023 |
|--|---------------------|---------------------|---------------------|---------------------|---------------------|
| Cantref Primary School | 210 | 210 | 210 | 209 | 212 |
| Gilwern Primary School | 203 | 220 | 213 | 211 | 209 |
| Goytre Fawr Primary School | 195 | 178 | 169 | 173 | 180 |
| King Henry VIII 3-19 School | 256 | 271 | 276 | 268 | 253 |
| Llanfoist Fawr Primary School | 210 | 210 | 204 | 202 | 203 |
| Llantilio Pertholey VC Primary School | 201 | 204 | 184 | 191 | 191 |
| Llanvihangel Crucorney Primary School | 68 | 69 | 71 | 72 | 65 |

| | | | | | |
|---|-----|-----|-----|-----|-----|
| Our Lady and St Michaels RC Primary School | 179 | 182 | 187 | 197 | 212 |
|---|-----|-----|-----|-----|-----|

6.2 PROJECTED NEED

The Council utilises a range of data to analyse the forecasted demand on school places across the County. Information supplied by Aneurin Bevan University Health Board (ABUHB) relating to newborn children within the County enables us to review the demand levels and ensure appropriate provision is in place for those children entering into the Primary and Secondary School system.

The information in the table below identifies the expected pupil numbers in the Abergavenny area over the next period of time. The Projected figures within this document include figures from known housing developments, however, the Council will shortly be publishing a new Local Development Plan (LDP) which will identify additional sites suitable for housing development in the area. The Council anticipates that these additional developments will increase pupil numbers over and above those published below.

6.3 PROJECTED NUMBER ON ROLL AT AFFECTED SCHOOLS

The projections included for the affected schools below have been formed on the basis of the current information that is available to us. This will include current numbers on roll, live birth information available through Health, and any known housing developments that have received planning permission.

The school numbers below are formed on the basis of a cluster projection model, which ensures that there is an appropriate number of school places at schools within the cluster to accommodate any potential oversubscription at individual schools. The projections also model a percentage of young people electing to attend Welsh Medium Education, formed on the basis of current trends, which could of course change and impact on the number attending English / Welsh Medium school(s).

The following table shows the projected numbers on roll over the next five years for Ysgol Gymraeg Y Fenni (excluding the Meithrin):

| School Name | January 2024 | January 2025 | January 2026 | January 2027 | January 2028 |
|------------------------------|---------------------|---------------------|---------------------|---------------------|---------------------|
| Ysgol Gymraeg Y Fenni | 241 | 250 | 268 | 273 | 284 |

The following table provides forecasted pupil numbers for the next five years for the schools likely to be affected by the proposals:

| School Name | January 2024 | January 2025 | January 2026 | January 2027 | January 2028 |
|---|--------------|--------------|--------------|--------------|--------------|
| Cantref Primary School | 212 | 212 | 212 | 212 | 212 |
| Gilwern Primary School | 214 | 216 | 209 | 192 | 194 |
| Goytre Fawr Primary School | 181 | 174 | 168 | 172 | 167 |
| King Henry VIII 3-19 School | 250 | 258 | 259 | 257 | 262 |
| Llanfoist Fawr Primary School | 210 | 210 | 211 | 211 | 212 |
| Llantilio Pertholey VC Primary School | 199 | 195 | 195 | 186 | 191 |
| Llanvihangel Crucorney Primary School | 70 | 61 | 70 | 67 | 65 |
| Our Lady and St Michaels RC Primary School | 204 | 205 | 202 | 198 | 198 |

6.4 IMPACT OF PROPOSALS ON SURPLUS PLACES

The projected levels of surplus places across the cluster reflecting the increase in capacity at Ysgol Gymraeg Y Fenni are:

| Total NOR | January 2024 | January 2025 | January 2026 | January 2027 | January 2028 |
|--------------------------------------|--------------|--------------|--------------|--------------|--------------|
| Total expected NOR | 1781 | 1781 | 1794 | 1768 | 1785 |
| Total English medium capacity | 1757 | 1757 | 1757 | 1757 | 1757 |
| Total Welsh medium capacity | 317 | 420 | 420 | 420 | 420 |

| | | | | | |
|-------------------------------------|----------------|----------------|----------------|----------------|----------------|
| Total English medium surplus | 217 / 12.3% | 226 / 12.8% | 231 / 13.1% | 262 / 14.9% | 256 / 14.6% |
| Total Welsh medium surplus | 76 / 23.9% | 170 / 40.4% | 152 / 36.1% | 147 / 35% | 136 / 32.3% |
| Total combined surplus | 293 / 14.1% | 396 / 18.1% | 383 / 17.6% | 409 / 18.7% | 392 / 18% |

6.5 BUILDING CONDITION RATINGS

The table below shows the building condition rating as assessed during the most recent condition survey carried out by Monmouthshire County Council for those schools likely to be affected by the proposal:

| Condition Rating | Definition |
|-------------------------|--|
| A | As new condition |
| B | Sound, operationally safe, and exhibiting only minor deterioration |
| C | Operational but major repair or replacement needed in the short to medium-term (generally 3 years) |
| D | Inoperable or serious risk of major failure or breakdown |

Ysgol Gymraeg Y Fenni's current building condition rating is shown in the table below:

| School Name | Condition rating |
|--|-------------------------|
| Ysgol Gymraeg Y Fenni (current site) | C |
| Ysgol Gymraeg Y Fenni (proposed site) | C* |

*Please note that the published condition rating shown above for the proposed new site is the assessed rating undertaken prior to the planned maintenance and refurbishment works that are associate with this proposal. It is anticipated that the condition rating will significantly improve as a result of these planned works.

For each of the schools affected by proposals, the below table confirms their current building condition rating:

| School Name | Condition rating |
|--|------------------|
| Cantref Primary School | A |
| Gilwern Primary School | C |
| Goytre Fawr Primary School | C |
| King Henry VIII 3-19 School | A |
| Llanfoist Fawr Primary School | B |
| Llantilio Pertholey VC Primary School | C |
| Llanvihangel Crucorney Primary School | C |
| Our Lady and St Michaels RC Primary School | C |

7. QUALITY AND STANDARDS IN EDUCATION

The leadership team at Ysgol Gymraeg Y Fenni will receive support from both the Local Authority and the regional consortia the Education Achievement Service (EAS) to help ensure the school continues to operate effective management and teaching practices. Monmouthshire has a good track record of delivering quality primary education.

Consideration of the potential impact of the proposal on quality and standards is aligned with the Estyn Inspection framework:

Learning

The proposal will not affect the quality of learning in any of the English medium schools in the Abergavenny cluster, however, it will have a positive impact on the young people attending Ysgol Gymraeg Y Fenni as they move to a location with an improved teaching and learning environment. Ysgol Gymraeg Y Fenni will continue to receive the appropriate level of challenge and support to ensure that high-quality learning is achieved.

Wellbeing and attitudes to learning

The proposed relocation and associated increase in capacity of Ysgol Gymraeg Y Fenni is expected to have a positive impact on the Abergavenny community who

wish to be educated through the medium of Welsh. We anticipate that there will be an increase in parental choice for Ysgol Gymraeg Y Fenni because the Council will be providing more Welsh medium places in an improved teaching and learning environment. Pupil wellbeing is a priority and is monitored and reported through school self-evaluation processes and improvement plans. The proposal will not impact negatively on wellbeing and attitudes towards learning at the other affected schools.

Teaching and learning experiences

Teaching and learning experiences at Ysgol Gymraeg Y Fenni will continue to follow the Curriculum for Wales, with Welsh as the language of teaching and learning. The proposal will not impact the teaching and learning experiences at the other affected schools.

For those currently attending Ysgol Gymraeg Y Fenni, the proposals are likely to have a hugely positive impact on their teaching and learning experiences as they relocate to an improved environment with excellent teaching and learning facilities.

Care support and guidance

Ysgol Gymraeg Y Fenni will continue to be supported by the local authority and the Education Achievement Service to provide high quality care, support, and guidance. There will be no change in care support and guidance at the other affected schools.

Leadership and management

There will be no change to the quality and effectiveness of leaders and managers at the other affected schools. The school leadership team will continue to receive support and guidance from the local authority and Education Achievement Service to ensure best practice in leadership and management are adopted.

A summary of Estyn Reports for affected schools can be found under appendix 2.

8. WELSH IN EDUCATION STRATEGIC PLAN

Monmouthshire's Welsh in Education Strategic Plan was approved by Welsh Government in June 2022. The increase in capacity of Ysgol Gymraeg Y Fenni will enable growth of the Welsh language within the area and will be a central element of our Welsh in Education Strategy to enable us to reach our target of having 115 learners, in each primary year group, being taught through the medium of Welsh by 2031.

The relocation of Ysgol Gymraeg Y Fenni is likely to impact positively on the number of learners opting for Welsh medium education as the accommodation and facilities offered at the new proposed site is far superior to that currently offered at the Ysgol Gymraeg Y Fenni site.

9. FINANCE

The Council's adopted SOP that formed the proposals to establish a new 3-19 School also identified the relocation of Ysgol Gymraeg Y Fenni to the former Deri View Primary school site. Capital funding in the region of £1million was identified and agreed during this process to support the relocation and undertake any required refurbishment works associated with this proposal.

The proposal would also result in an increase in capacity of Ysgol Gymraeg Y Fenni to become a provision for 420 pupils / two form entry. The school will continue to be funded in line with the adopted funding formula which will allow for the recruitment of additional staff as numbers on roll at the school increase.

10. LAND AND BUILDINGS

This consultation proposes the relocation of Ysgol Gymraeg Y Fenni from its current site to the site previously occupied by Deri View Primary School. Should proposals proceed beyond this consultation, the current Ysgol Gymraeg Y Fenni will become vacant.

There are currently no agreed plans for the future use of this site. Any agreed use of the site in future be subject to a separate consultation report.

12. STAFFING

Staff currently employed at Ysgol Gymraeg Y Fenni will transfer to the new school site should the proposals proceed to implementation. The proposals do not place existing staff at risk of redundancy.

As well as the relocation of the school site, it is proposed that the capacity of the school increases to become a provision for 420 pupils / two form entry. The school will continue to be funded in line with the adopted funding formula which will allow for the recruitment of additional staff as numbers on roll at the school increase.

13. COMMUNITY IMPACT / EQUALITY IMPACT ASSESSMENT

13.1 COMMUNITY IMPACT ASSESSMENT

Community Impact Assessments are a structured way for the Council to fully understand the implications of its decisions and whether they are detrimental or discriminatory to certain groups or sections of the community. They help the Council to consider the impact of its decisions and policies within and between communities more generally. The Community Impact Assessment process ensures that the Council's decision making process is robust and impacts on all communities within Monmouthshire are fully considered in Council business. By carrying out impact

assessments, the Council is working to promote equality for all our service users, employees and the wider community.

13.2 EQUALITY IMPACT ASSESSMENT

The Council recognises that people have different needs, requirements and goals and will work actively against all forms of discrimination by promoting good relations and mutual respect within and between our communities, residents, elected members, job applicants and workforce. The Council will also work to create equal access for everyone to our services, irrespective of ethnic origin, sex, age, marital status, sexual orientation, disability, gender reassignment, religious beliefs or non-belief's, use of Welsh language, BSL or other languages, nationality, responsibility for any dependents, or any other reason which cannot be shown to be justified.

An Equality Impact Assessments has been undertaken and can be found at www.monmouthshire.gov.uk/school-reorganisation

14. WELSH LANGUAGE IMPACT

The proposal supports all of the targets set out in the Welsh Education Strategic Plan. If the proposal were to be implemented Welsh Language provision would be expanded through offering a 420 place school capable of accommodating two forms of entry.

It is evident from the information provided above that the proposal would have a positive impact on Welsh Language provision within the area and in particular Abergavenny.

15. ADMISSION ARRANGEMENTS

Monmouthshire County Council will continue to be responsible for the admission arrangements at Ysgol Gymraeg Y Fenni, and any decisions undertaken in line with the agreed School Admission Policy.

Parents / carers will have the opportunity to complete an application online and can express up to three preferences. The Local Authority operates an equal preference scheme, which means that all preferences are considered equally in line with the Local Authority's oversubscription criteria, and not on the basis of the order in which they are listed on the application form.

15.1 CATCHMENT AREAS

Catchment Areas

There are no proposals to amend the catchment area for Ysgol Gymraeg Y Fenni as a result of these proposals. The agreed catchment areas for Ysgol Gymraeg Y Fenni, Ysgol Gymraeg Y Ffin and Ysgol Gymraeg Trefynwy can be found under appendix 1.

16. HOME TO SCHOOL TRANSPORT

The proposals outlined within this document are not expected to have an impact on Home to school transport arrangements. Home to school transport will be provided to Ysgol Gymraeg Y Fenni in line with the current policy, which states pupils who attend their nearest or catchment primary school and reside more than 1.5 miles away will be eligible.

Further details of the home to school transport policy can be found on the following link:

<https://www.monmouthshire.gov.uk/school-transport-home-to-school>

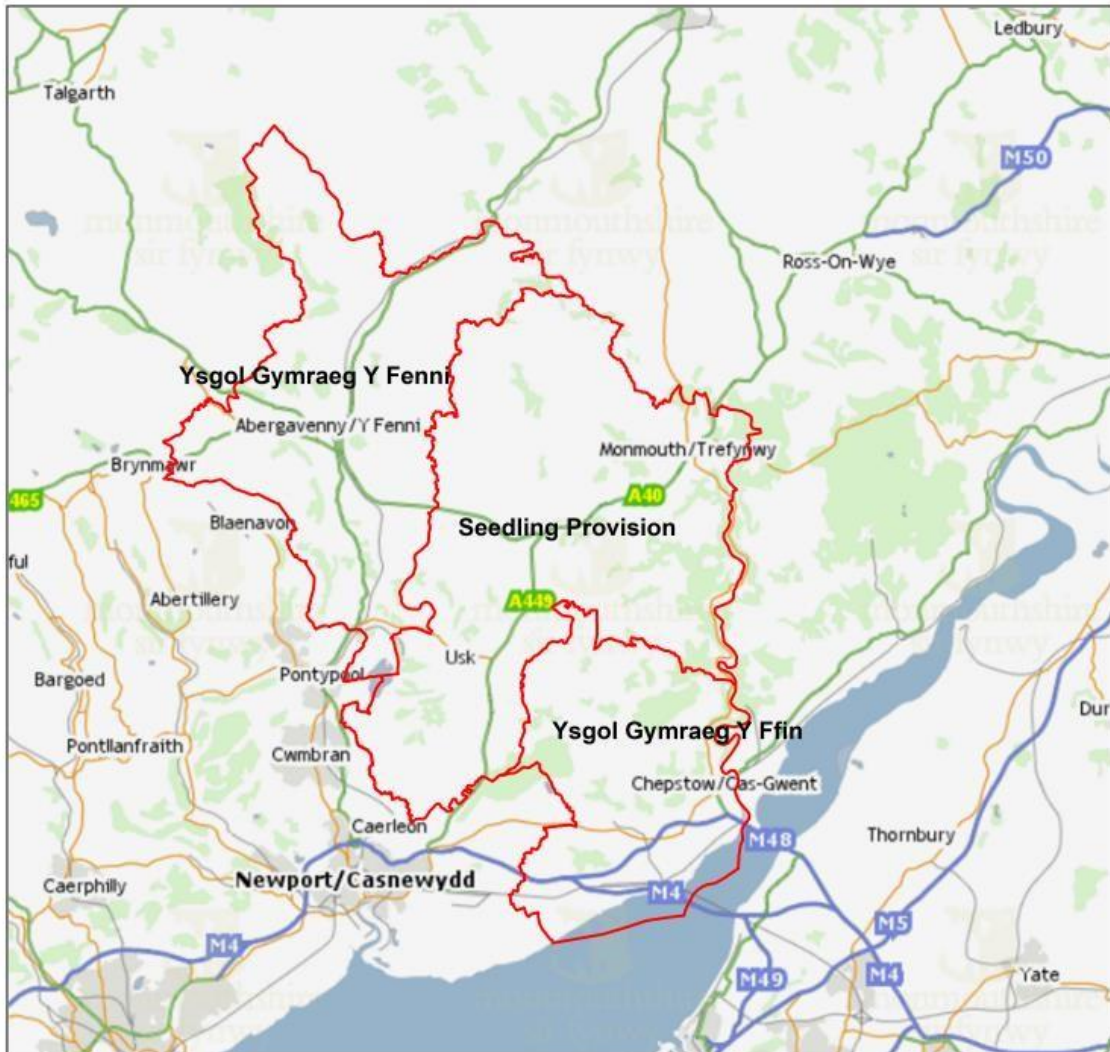
17. OTHER INFORMATION

Further Information and regular up-dates on this proposal can be found on the following webpage:

www.monmouthshire.gov.uk/school-reorganisation

Frequently asked questions will be up-loaded weekly and put onto the Monmouthshire County Council Website.

18. APPENDIX 1 - AGREED CATCHMENT AREAS



19. APPENDIX 2 - ESTYN REPORTS

Cantref Primary School

| Inspection date | Recommendations | Follow-up |
|-----------------|---|-----------|
| 2023 | R1 Ensure that the curriculum is meaningful for all pupils and builds systematically and coherently across the school. R2 Ensure that pupils have regular opportunities to improve their own work. | No |

Cantref Primary School has received the lowest level of support for the last five years. It has maintained standards across the school over the last nine years.

Gilwern Primary School

| Inspection date | Recommendations | Follow-up |
|-----------------|--|-----------|
| 2022 | R1 Improve teaching, particularly for pupils from Year 3 to Year 6 R2 Improve pupils' reading and writing skills, especially from Year 3 to Year 6 R3 Improve processes to monitor and evaluate the effectiveness of teaching. R4 Address the site safety issue that was identified during the inspection | No |

Gilwern Primary School has received an enhanced level of support over the last year and as result of the progress made to address the four recommendations from the last Estyn inspection, it is no longer in Estyn follow-up.

Llanfoist Fawr Primary School

| Inspection date | Recommendations | Follow-up |
|-----------------|---|-----------|
| 2023 | R1 Improve self-evaluation processes across the federation. R2 Ensure that teaching is consistently good across the federation of schools. R3 Improve provision to support pupils to become independent learners. R4 Improve pupils' Welsh oracy skills. | No |

Llanfoist Fawr Primary School has received the lowest level of support for the last five years. The school successfully federated with Llanvihangel Crucorney Primary School in September 2018.

Llanvihangel Crucorney Primary School

| Inspection date | Recommendations | Follow-up |
|-----------------|---|-----------|
| 2023 | R1 Improve self-evaluation processes across the federation. R2 Ensure that teaching is consistently good across the federation of schools. R3 Improve provision to support pupils to become independent learners. R4 Improve pupils' Welsh oracy skills. | No |

Llanvihangel has received the lowest level of support for the last five years. The school successfully federated Llanfoist Fawr with Primary School in September 2018.

Our Lady and St Michael's Roman Catholic Primary School

| Inspection date | Outcomes | Provision | Leadership and Management | Overall Performance | | Follow-up |
|-----------------|----------|-----------|---------------------------|---------------------|---------------------------|------------------|
| | | | | Performance | Prospects for Improvement | |
| 2016 | Good | Adequate | Adequate | Adequate | Adequate | Estyn Monitoring |

In the latest national categorisation for schools across Wales, Our Lady and St. Michael's Roman Catholic Primary School is in a limited support category for the second year in succession and is an improvement from an enhanced level of support in 2017/18, indicating that the school requires less support to improve standards further. Estyn removed the school from the list of schools requiring monitoring in 2017.

Llantillio Pertholey Church in Wales Primary School

| Inspection date | Outcomes | Provision | Leadership and Management | Overall Performance | | Follow-up |
|-----------------|----------|-----------|---------------------------|---------------------|---------------------------|------------------|
| | | | | Performance | Prospects for Improvement | |
| 2016 | Adequate | Adequate | Adequate | Adequate | Adequate | Estyn Monitoring |

Llantillio Pertholey Church in Wales Primary School has received an enhanced level of support over the last three years. Estyn removed the school from the list of schools requiring monitoring in 2018.

Ysgol Gymraeg Y Fenni

| Inspection date | Outcomes | Provision | Leadership and Management | Overall Performance | | Follow-up |
|-----------------|----------|-----------|---------------------------|---------------------|---------------------------|-----------|
| | | | | Performance | Prospects for Improvement | |
| 2017 | Good | Good | Good | Good | Good | No |

Estyn invited the school to submit an Excellent Practice Case following the inspection in 2017. In the latest national categorisation for schools across Wales, Ysgol Gymraeg Y Fenni continues to receive a low level of support.

New Inspection Framework (September 2017 onwards)

Goytre Fawr Primary School

| Inspection date | Outcomes | Provision | Leadership and Management | Overall Performance | | Follow-up |
|-----------------|----------|-----------|---------------------------|---------------------|---------------------------|-----------|
| | | | | Performance | Prospects for Improvement | |
| 2019 | Good | Good | Good | Good | Adequate | No |

The level of support in Goytre Fawr has been low during the last five years. Estyn removed the school from the list of schools requiring monitoring in 2020.

Changes to school performance reporting means that we are unable to provide information about the academic performance of individual schools. This includes outcomes from teacher assessment and external examinations.

20. APPENDIX 3 - LIST OF CONSULTEES

- Parents, carers/guardians and staff members of schools affected by the proposal
- The governing body of any school affected by the proposal
- Pupils/Pupil Councils of schools directly affected by the proposal
- Headteachers of schools affected by the proposal
- Welsh Ministers
- All MCC Town and Community Councils
- All MCC Assembly Members representing the area served by the school
- All Members of Parliament representing MCC area
- All MCC Libraries
- Directors of Education of all bordering LAs – Blaenau Gwent, Newport, Powys, Torfaen, Herefordshire, Gloucestershire
- MCC Youth Service
- GAVO
- Monmouthshire Governors Association
- Teaching trade unions
- Support Staff trade unions
- Welsh Language Commissioner
- Welsh Ministers
- ESTYN
- RHAG
- Mudiad Meithrin
- Church in Wales Diocesan Trust, Director of Education
- Roman Catholic Diocesan Trust, Director of Education
- South East Wales Consortium
- South East Wales Education Achievement Service
- Gwent Police and Crime Commissioner
- Early Years & Childcare Partnership
- Welsh in Education Forum



PROPOSAL – *relocate and extend the capacity of Ysgol Gymraeg Y Fenni*

YOUR VIEWS

We would like your views on the above proposal. Please complete this pro-forma and return it to the address at the bottom, alternatively it can be handed in at the consultation event or there is an on-line response pro-forma available at www.monmouthshire.gov.uk/school-reorganisation

Access Unit, Monmouthshire County Council, County Hall, Rhadyr, Usk, NP15 1GA
or email strategicreview@monmouthshire.gov.uk.

Please tick the box if you wish to be notified of the publication of the consultation
report.